

desrosiers

A U T O M O T I V E

reports

In this issue

1	Canadian Light Vehicle Sales
	<ul style="list-style-type: none"> Canadian year end sales improve 6.1% versus 2014
4	U.S. Light Vehicle Sales
	<ul style="list-style-type: none"> U.S. December light vehicle sales up 10.8%
6	Mexican Sales
	<ul style="list-style-type: none"> Year End 2014 results
7	Canadian and U.S. Light Vehicle Sales by Source of Manufacture
	<ul style="list-style-type: none"> Year End 2014 results
10	Plant Sourcing
	<ul style="list-style-type: none"> 2015 Model Year Information
	Insert
	<ul style="list-style-type: none"> "Luxury Vehicle Review for 2014" By: Dennis DesRosiers U.S. Light Vehicle Sales by Model - 2014 vs. 2013

Canadian year end sales improve 6.1% versus 2014

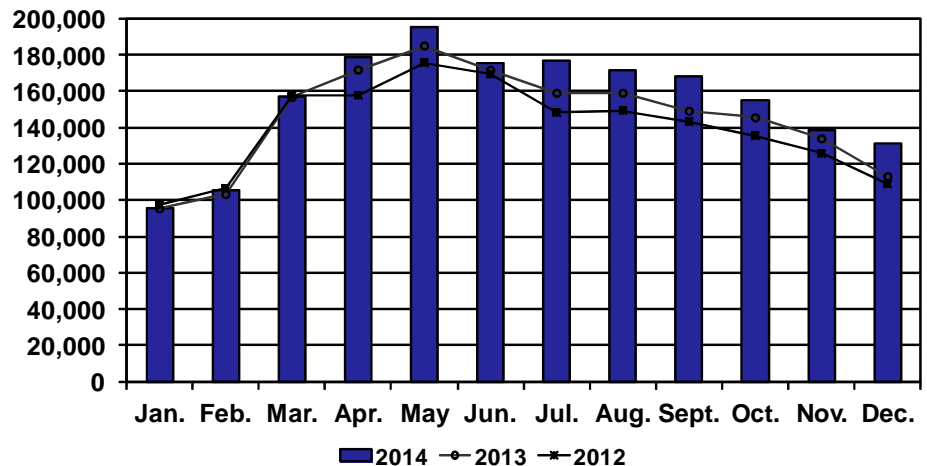
Light vehicle sales in Canada ended 2014 with a surge of 16.1% gain in December sales compared to the previous year. Total deliveries reached 131,393 units, up from 113,142 units in 2013. Both light truck and passenger car sales recorded double-digit gains of 19.5% and 10.7%, respectively. Light truck deliveries totalled 83,391 units in December, up from 69,788 units in the previous year. Passenger car sales reached 48,002 units, up from 43,354 units last year.

Year-end sales for 2014 reached 1,851,373 units, up 6.1% from 2013 when 1,744,567 units were sold. Light truck deliveries were up 11.0% while passenger car sales dipped 0.1%.

Year-over-year growth for December was led by Ford (+40.1%), Chrysler (+39.9%), Infiniti (+35.8%), Audi (+34.0%) and Jaguar (+33.0%). Double-digit growth in both passenger car and light truck sales were evident at Chrysler, Ford, and Infiniti and passenger car at Ford (+75.9%) recorded the largest year-over-year growth amongst all

(continued on page 3)

Light Vehicle Sales in Canada 2014 vs. 2013 vs. 2012



Source: DesRosiers Automotive Consultants Inc, CVMA and GAC

80 Fulton Way Tel. 905.881.0400
 Suite 101 Fax. 905.881.7456
 Richmond Hill, ON E-mail. lori@desrosiers.ca
 Website. www.desrosiers.ca

For more information concerning the DesRosiers Automotive Reports, please contact:

Lori Gamoff
 Consultant

Publishing Division
 Publisher: Dennis DesRosiers
 Editor: Charles Zhou & Teresa Xing
 Production: Teresa Xing & Stefanie Tarrant

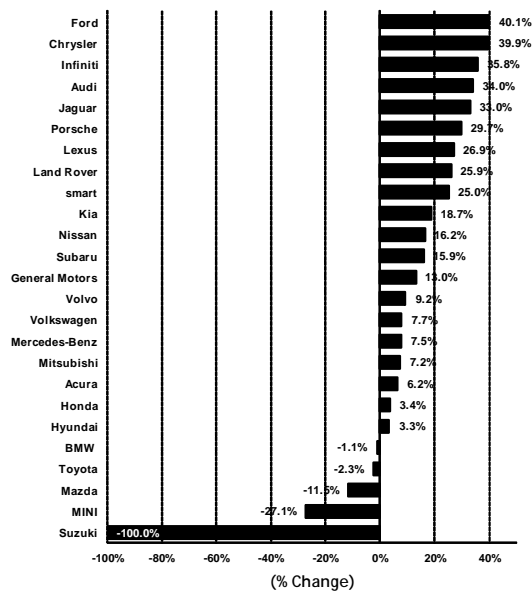
Canadian Passenger Car and Light Truck Sales - December 2014

Table 1: Canadian Light Vehicle Sales

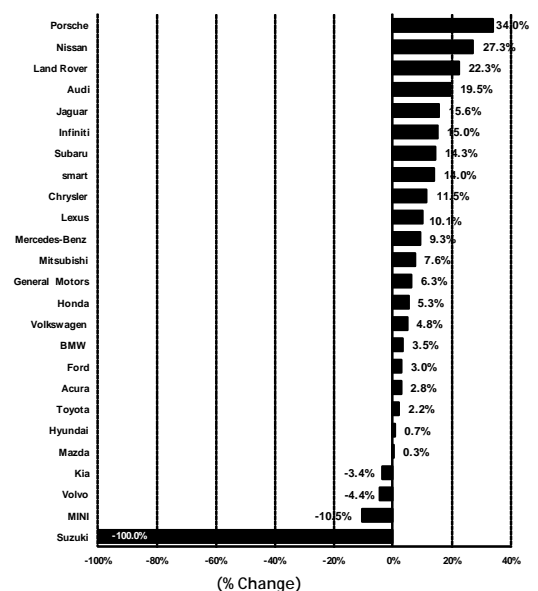
	December 2014	December 2013	Percent Change	YE 2014	YE 2013	Percent Change	Market Share 2014	Market Share 2013	Point Change
Acura	1,884	1,774	6.2%	19,533	19,005	2.8%	1.1%	1.1%	0.0
Passenger Car	675	671	0.6%	6,698	6,730	-0.5%	0.4%	0.4%	0.0
Light Truck	1,209	1,103	9.6%	12,835	12,275	4.6%	0.7%	0.7%	0.0
Audi	1,920	1,433	34.0%	24,514	20,506	19.5%	1.3%	1.2%	0.1
Passenger Car	947	687	37.8%	13,127	11,178	17.4%	0.7%	0.6%	0.1
Light Truck	973	746	30.4%	11,387	9,328	22.1%	0.6%	0.5%	0.1
BMW	2,528	2,556	-1.1%	32,805	31,710	3.5%	1.8%	1.8%	0.0
Passenger Car	1,451	1,380	5.1%	17,994	17,689	1.7%	1.0%	1.0%	0.0
Light Truck	1,077	1,176	-8.4%	14,811	14,021	5.6%	0.8%	0.8%	0.0
Chrysler	21,613	15,445	39.9%	290,004	260,015	11.5%	15.7%	14.9%	0.8
Passenger Car	1,953	1,594	22.5%	37,346	48,413	-22.9%	2.0%	2.8%	-0.8
Light Truck	19,660	13,851	41.9%	252,658	211,602	19.4%	13.6%	12.1%	1.5
Ford	22,625	16,153	40.1%	291,823	283,451	3.0%	15.8%	16.2%	-0.5
Passenger Car	5,142	2,923	75.9%	62,348	68,341	-8.8%	3.4%	3.9%	-0.5
Light Truck	17,483	13,230	32.1%	229,475	215,110	6.7%	12.4%	12.3%	0.1
General Motors	19,247	17,036	13.0%	249,800	234,944	6.3%	13.5%	13.5%	0.0
Passenger Car	5,880	4,786	22.9%	76,379	71,708	6.5%	4.1%	4.1%	0.0
Light Truck	13,367	12,250	9.1%	173,421	163,236	6.2%	9.4%	9.4%	0.0
Honda	11,934	11,542	3.4%	152,893	145,231	5.3%	8.3%	8.3%	-0.1
Passenger Car	5,966	6,204	-3.8%	94,851	90,879	4.4%	5.1%	5.2%	-0.1
Light Truck	5,968	5,338	11.8%	58,042	54,352	6.8%	3.1%	3.1%	0.0
Hyundai	7,545	7,304	3.3%	138,104	137,100	0.7%	7.5%	7.9%	-0.4
Passenger Car	4,826	4,464	8.1%	93,774	95,825	-2.1%	5.1%	5.5%	-0.4
Light Truck	2,719	2,840	-4.3%	44,330	41,275	7.4%	2.4%	2.4%	0.0
Infiniti	801	590	35.8%	10,291	8,947	15.0%	0.6%	0.5%	0.0
Passenger Car	222	191	16.2%	3,794	3,297	15.1%	0.2%	0.2%	0.0
Light Truck	579	399	45.1%	6,497	5,650	15.0%	0.4%	0.3%	0.0
Jaguar	117	88	33.0%	1,460	1,263	15.6%	0.1%	0.1%	0.0
Kia	3,352	2,825	18.7%	70,007	72,449	-3.4%	3.8%	4.2%	-0.4
Passenger Car	2,145	1,883	13.9%	49,292	50,237	-1.9%	2.7%	2.9%	-0.2
Light Truck	1,207	942	28.1%	20,715	22,212	-6.7%	1.1%	1.3%	-0.2
Land Rover	632	502	25.9%	6,283	5,136	22.3%	0.3%	0.3%	0.0
Lexus	1,509	1,189	26.9%	17,565	15,949	10.1%	0.9%	0.9%	0.0
Passenger Car	546	528	3.4%	8,432	7,513	12.2%	0.5%	0.4%	0.0
Light Truck	963	661	45.7%	9,133	8,436	8.3%	0.5%	0.5%	0.0
Mazda	4,034	4,558	-11.5%	72,098	71,859	0.3%	3.9%	4.1%	-0.2
Passenger Car	2,576	3,237	-20.4%	50,635	52,775	-4.1%	2.7%	3.0%	-0.3
Light Truck	1,458	1,321	10.4%	21,463	19,084	12.5%	1.2%	1.1%	0.1
Mercedes-Benz	3,176	2,955	7.5%	38,005	34,781	9.3%	2.1%	2.0%	0.1
Passenger Car	1,581	1,585	-0.3%	19,234	17,839	7.8%	1.0%	1.0%	0.0
Light Truck	1,595	1,370	16.4%	18,771	16,942	10.8%	1.0%	1.0%	0.0
MINI	455	624	-27.1%	5,383	6,013	-10.5%	0.3%	0.3%	-0.1
Passenger Car	345	375	-8.0%	3,350	3,896	-14.0%	0.2%	0.2%	0.0
Light Truck	110	249	-55.8%	2,033	2,117	-4.0%	0.1%	0.1%	0.0
Mitsubishi	1,407	1,313	7.2%	22,704	21,104	7.6%	1.2%	1.2%	0.0
Passenger Car	639	430	48.6%	10,780	8,189	31.6%	0.6%	0.5%	0.1
Light Truck	768	883	-13.0%	11,924	12,915	-7.7%	0.6%	0.7%	-0.1
Nissan	7,330	6,306	16.2%	105,154	82,604	27.3%	5.7%	4.7%	0.9
Passenger Car	3,272	2,534	29.1%	48,214	39,739	21.3%	2.6%	2.3%	0.3
Light Truck	4,058	3,772	7.6%	56,940	42,865	32.8%	3.1%	2.5%	0.6
Porsche	362	279	29.7%	4,933	3,680	34.0%	0.3%	0.2%	0.1
Passenger Car	79	117	-32.5%	1,806	1,630	10.8%	0.1%	0.1%	0.0
Light Truck	283	162	74.7%	3,127	2,050	52.5%	0.2%	0.1%	0.1
smart	205	164	25.0%	2,550	2,237	14.0%	0.1%	0.1%	0.0
Subaru	3,133	2,704	15.9%	42,035	36,760	14.3%	2.3%	2.1%	0.2
Passenger Car	1,023	836	22.4%	14,003	13,052	7.3%	0.8%	0.7%	0.0
Light Truck	2,110	1,868	13.0%	28,032	23,708	18.2%	1.5%	1.4%	0.2
Suzuki	-	305	-100.0%	-	3,071	-100.0%	0.0%	0.2%	-0.2
Passenger Car	-	170	-100.0%	-	1,922	-100.0%	0.0%	0.1%	-0.1
Light Truck	-	135	-100.0%	-	1,149	-100.0%	0.0%	0.1%	-0.1
Toyota	10,906	11,159	-2.3%	183,286	179,411	2.2%	9.9%	10.3%	-0.4
Passenger Car	4,676	5,096	-8.2%	92,491	95,066	-2.7%	5.0%	5.4%	-0.5
Light Truck	6,230	6,063	2.8%	90,795	84,345	7.6%	4.9%	4.8%	0.1
Volkswagen	4,394	4,078	7.7%	65,677	62,668	4.8%	3.5%	3.6%	0.0
Passenger Car	3,615	3,316	9.0%	53,249	53,096	0.3%	2.9%	3.0%	-0.2
Light Truck	779	762	2.2%	12,428	9,572	29.8%	0.7%	0.5%	0.1
Volvo	284	260	9.2%	4,466	4,673	-4.4%	0.2%	0.3%	0.0
Passenger Car	121	95	27.4%	1,985	1,868	6.3%	0.1%	0.1%	0.0
Light Truck	163	165	-1.2%	2,481	2,805	-11.6%	0.1%	0.2%	0.0
Passenger Car Total	48,002	43,354	10.7%	763,792	764,382	-0.1%	41.3%	43.8%	-2.6
Light Truck Total	83,391	69,788	19.5%	1,087,581	980,185	11.0%	58.7%	56.2%	2.6
Total Light Vehicle Sales	131,393	113,142	16.1%	1,851,373	1,744,567	6.1%	100.0%	100.0%	

Source: DesRosiers Automotive Consultants Inc., GAC and CVMA

Total Canadian Light Vehicle Sales % Change December 2014 vs. December 2013



Total Canadian Light Vehicle Sales % Change YE 2014 vs. YE 2013



(continued from page 1)

automakers. Year-end sales for 2014 were up for all automakers mentioned above.

Impressive year-over-year growth in December sales were secured by Porsche (+29.7%), Lexus (+26.9%), Land Rover (+25.9%), and smart (+25.0%). Both Porsche (+74.7%) and Lexus (+45.7%) posted strong year-over-year growth in light truck sales. Year-end sales were up for all four automakers mentioned above. Porsche (+34.0%) posted the highest upturn in year-end sales among all reporting automakers.

Kia (+18.7%), Nissan (+16.2%), Subaru (+15.9%)

and General Motors (+13.0%) confirmed double-digit year-over-year growth in December sales. Nissan and Subaru reported double-digit gains in both passenger car and light truck deliveries. Year-end sales were up for all automakers mentioned above with the exception of Kia (-3.4%).

Volvo (+9.2%), Volkswagen (+7.7%), Mercedes-Benz (+7.5%), Mitsubishi (+7.2%), Acura (+6.2%), Honda (+3.4%) and Hyundai (+3.3%) achieved modest year-over-year growth in December sales compared to last year. Volkswagen and Acura confirmed gains in both passenger car and light truck

sales while Mitsubishi (+48.6%), Volvo (+27.4%) and Hyundai (+8.1%) witnessed gains in passenger car volume for December.

Declines in December sales were felt by BMW (-1.1%), Toyota (-2.3%), Mazda (-11.5%) and MINI (-27.1%). Light truck deliveries were up for Mazda (+10.4%) and Toyota (+2.8%). MINI reported declines in both passenger car and light truck deliveries compared to last year. Year-end sales were up for all automakers mentioned above with the exception of MINI (-10.5%). **DAR**

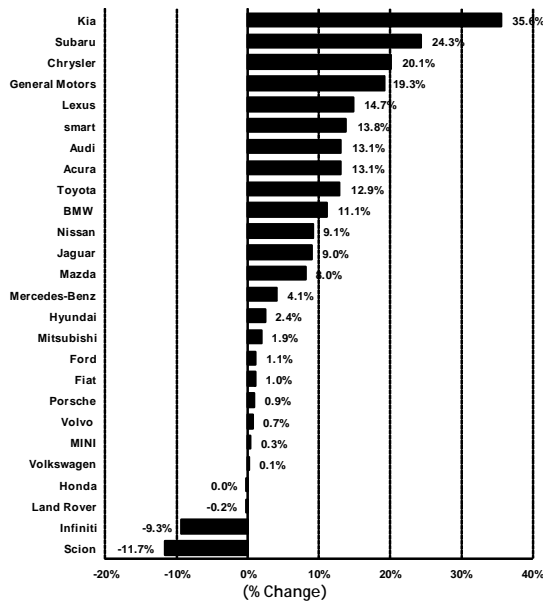
U.S. Passenger Car and Light Truck Sales - December 2014

Table 3: U.S. Light Vehicle Sales

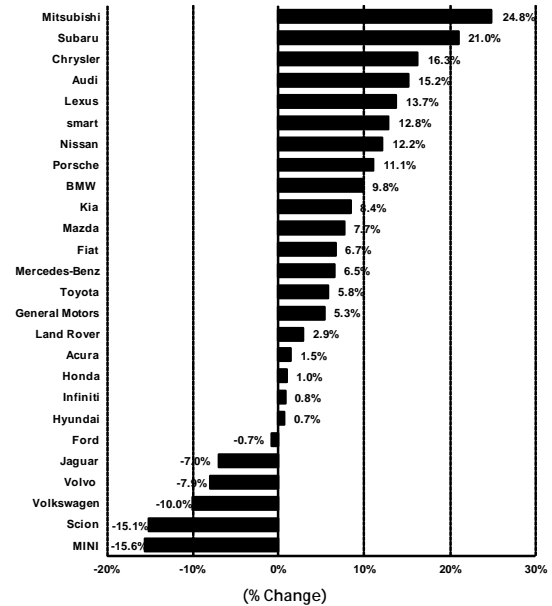
	December 2014	December 2013	Percent Change	YE 2014	YTD 2013	Percent Change	Market Share 2014	Market Share 2013	Point Change
Acura	17,809	15,751	13.1%	167,843	165,436	1.5%	1.0%	1.1%	0.0
Passenger Car	5,890	4,984	18.2%	57,297	67,285	-14.8%	0.3%	0.4%	-0.1
Light Truck	11,919	10,767	10.7%	110,546	98,151	12.6%	0.7%	0.6%	0.0
Alfa Romeo	67	-	N.A.	91	-	N.A.	0.0%	0.0%	0.0
Audi	19,238	17,013	13.1%	182,011	158,061	15.2%	1.1%	1.0%	0.1
Passenger Car	11,858	9,940	19.3%	117,420	101,728	15.4%	0.7%	0.7%	0.1
Light Truck	7,380	7,073	4.3%	64,591	56,333	14.7%	0.4%	0.4%	0.0
BMW	41,526	37,389	11.1%	339,738	309,280	9.8%	2.1%	2.0%	0.1
Passenger Car	28,764	28,266	1.8%	229,470	206,778	11.0%	1.4%	1.3%	0.1
Light Truck	12,762	9,123	39.9%	110,268	102,502	7.6%	0.7%	0.7%	0.0
Chrysler	187,421	156,022	20.1%	2,030,026	1,746,231	16.3%	12.4%	11.3%	1.1
Passenger Car	41,006	34,004	20.6%	452,778	507,868	-10.8%	2.8%	3.3%	-0.5
Light Truck	146,415	122,018	20.0%	1,577,248	1,238,363	27.4%	9.6%	8.0%	1.6
Fiat	3,784	3,745	1.0%	46,121	43,236	6.7%	0.3%	0.3%	0.0
Ford	214,254	211,860	1.1%	2,418,260	2,435,794	-0.7%	14.7%	15.7%	-1.0
Passenger Car	60,557	61,516	-1.6%	804,714	836,433	-3.8%	4.9%	5.4%	-0.5
Light Truck	153,697	150,344	2.2%	1,613,546	1,599,361	0.9%	9.8%	10.3%	-0.5
General Motors	274,483	230,157	19.3%	2,935,008	2,786,078	5.3%	17.9%	18.0%	-0.1
Passenger Car	85,592	79,077	8.2%	1,085,104	1,066,934	1.7%	6.6%	6.9%	-0.3
Light Truck	188,891	151,080	25.0%	1,849,904	1,719,144	7.6%	11.3%	11.1%	0.2
Honda	119,472	119,504	0.0%	1,373,029	1,359,872	1.0%	8.4%	8.8%	-0.4
Passenger Car	63,912	66,744	-4.2%	781,224	765,733	2.0%	4.8%	4.9%	-0.2
Light Truck	55,560	52,760	5.3%	591,805	594,139	-0.4%	3.6%	3.8%	-0.2
Hyundai	64,507	63,005	2.4%	725,718	720,783	0.7%	4.4%	4.6%	-0.2
Passenger Car	50,998	51,042	-0.1%	570,505	589,858	-3.3%	3.5%	3.8%	-0.3
Light Truck	13,509	11,963	12.9%	155,213	130,925	18.6%	0.9%	0.8%	0.1
Infiniti	12,007	13,232	-9.3%	117,330	116,455	0.8%	0.7%	0.8%	0.0
Passenger Car	6,353	6,857	-7.4%	65,263	63,161	3.3%	0.4%	0.4%	0.0
Light Truck	5,654	6,375	-11.3%	52,067	53,294	-2.3%	0.3%	0.3%	0.0
Jaguar	1,683	1,544	9.0%	15,773	16,952	-7.0%	0.1%	0.1%	0.0
Kia	45,587	33,631	35.6%	580,234	535,179	8.4%	3.5%	3.5%	0.1
Passenger Car	29,604	23,121	28.0%	420,202	389,486	7.9%	2.6%	2.5%	0.0
Light Truck	15,983	10,510	52.1%	160,032	145,693	9.8%	1.0%	0.9%	0.0
Land Rover	5,754	5,764	-0.2%	51,465	50,010	2.9%	0.3%	0.3%	0.0
Lexus	39,879	34,757	14.7%	311,389	273,847	13.7%	1.9%	1.8%	0.1
Passenger Car	20,137	19,083	5.5%	174,235	153,166	13.8%	1.1%	1.0%	0.1
Light Truck	19,742	15,674	26.0%	137,154	120,681	13.7%	0.8%	0.8%	0.1
Mazda	24,808	22,964	8.0%	305,801	283,944	7.7%	1.9%	1.8%	0.0
Passenger Car	15,338	14,705	4.3%	188,182	179,772	4.7%	1.1%	1.2%	0.0
Light Truck	9,470	8,259	14.7%	117,619	104,172	12.9%	0.7%	0.7%	0.0
Mercedes-Benz	37,297	35,835	4.1%	356,136	334,324	6.5%	2.2%	2.2%	0.0
Passenger Car	20,683	22,855	-9.5%	212,086	206,193	2.9%	1.3%	1.3%	0.0
Light Truck	16,614	12,980	28.0%	144,050	128,131	12.4%	0.9%	0.8%	0.1
MINI	6,615	6,592	0.3%	56,112	66,502	-15.6%	0.3%	0.4%	-0.1
Passenger Car	4,545	3,887	16.9%	31,385	41,915	-25.1%	0.2%	0.3%	-0.1
Light Truck	2,070	2,705	-23.5%	24,727	24,587	0.6%	0.2%	0.2%	0.0
Mitsubishi	6,545	6,423	1.9%	77,643	62,227	24.8%	0.5%	0.4%	0.1
Passenger Car	2,694	2,776	-3.0%	33,521	24,965	34.3%	0.2%	0.2%	0.0
Light Truck	3,851	3,647	5.6%	44,122	37,262	18.4%	0.3%	0.2%	0.0
Nissan	105,311	96,526	9.1%	1,269,565	1,131,965	12.2%	7.7%	7.3%	0.4
Passenger Car	63,923	54,496	17.3%	751,714	656,982	14.4%	4.6%	4.2%	0.3
Light Truck	41,388	42,030	-1.5%	517,851	474,983	9.0%	3.2%	3.1%	0.1
Porsche	3,275	3,246	0.9%	47,007	42,323	11.1%	0.3%	0.3%	0.0
Passenger Car	1,477	1,867	-20.9%	23,561	23,816	-1.1%	0.1%	0.2%	0.0
Light Truck	1,798	1,379	30.4%	23,446	18,507	26.7%	0.1%	0.1%	0.0
Scion	3,817	4,323	-11.7%	58,009	68,321	-15.1%	0.4%	0.4%	-0.1
smart	973	855	13.8%	10,453	9,264	12.8%	0.1%	0.1%	0.0
Subaru	49,923	40,172	24.3%	513,693	424,683	21.0%	3.1%	2.7%	0.4
Passenger Car	14,497	10,273	41.1%	143,262	127,703	12.2%	0.9%	0.8%	0.0
Light Truck	35,426	29,899	18.5%	370,431	296,980	24.7%	2.3%	1.9%	0.3
Suzuki	-	-	N.A.	-	5,949	-100.0%	0.0%	0.0%	0.0
Passenger Car	-	-	n.a.	-	4,461	-100.0%	0.0%	0.0%	0.0
Light Truck	-	-	n.a.	-	1,488	-100.0%	0.0%	0.0%	0.0
Toyota	171,361	151,763	12.9%	2,004,373	1,893,874	5.8%	12.2%	12.2%	0.0
Passenger Car	84,263	75,059	12.3%	1,055,933	1,037,224	1.8%	6.4%	6.7%	-0.3
Light Truck	87,098	76,704	13.6%	948,440	856,650	10.7%	5.8%	5.5%	0.3
Volkswagen	34,058	34,015	0.1%	366,969	407,704	-10.0%	2.2%	2.6%	-0.4
Passenger Car	31,337	30,449	2.9%	333,784	367,360	-9.1%	2.0%	2.4%	-0.3
Light Truck	2,721	3,566	-23.7%	33,185	40,344	-17.7%	0.2%	0.3%	-0.1
Volvo	4,920	4,888	0.7%	56,366	61,233	-7.9%	0.3%	0.4%	-0.1
Passenger Car	2,303	2,174	5.9%	28,045	29,740	-5.7%	0.2%	0.2%	0.0
Light Truck	2,617	2,714	-3.6%	28,321	31,493	-10.1%	0.2%	0.2%	0.0
Passenger Car Total	656,055	613,642	6.9%	7,690,132	7,586,334	1.4%	46.8%	48.9%	-2.1
Light Truck Total	840,319	737,334	14.0%	8,726,031	7,923,193	10.1%	53.2%	51.1%	2.1
Total Light Vehicle Sales	1,496,374	1,350,976	10.8%	16,416,163	15,509,527	5.8%	100.0%	100.0%	

Source: DesRosiers Automotive Consultants Inc. and Ward's Automotive Reports

Total U.S. Light Vehicle Sales % Change December 2014 vs. December 2013



Total U.S. Light Vehicle Sales % Change YE 2014 vs. YE 2013



U.S. December light vehicle sales up 10.8%

December light vehicle sales were up 10.8% in the U.S. as 1.50 million units were purchased, up from 1.35 million units in December 2013. A 14.0% upswing in light truck deliveries brought total sales up to 840,319 units compared to 737,334 units in the previous year. Passenger car sales witnessed a modest rise of 6.9% with a total of 656,055 units sold. Year-end sales for 2014 improved 5.8% as total units delivered reached 16.42 million, up from 15.51 million units in 2013.

Kia (+35.6%), Subaru (+24.3%), Chrysler (+20.1%), General Motors (+19.3%), and Lexus (+14.7%) secured the highest year-over-year growth in December sales. Double-digit growth in both passenger car and light truck

sales was achieved for Kia, Subaru and Chrysler. Year-end sales for 2014 were up for all five automakers mentioned above.

smart (+13.8%), Audi (+13.1%), Acura (+13.1%), Toyota (+12.9%) and BMW (+11.1%) round-out the remaining automakers to record double-digit year-over-year gains in December sales. BMW witnessed a 39.9% upturn in its light truck sales. Year-end sales were up for all automakers mentioned above.

Modest growth in December sales was evident at Nissan (+9.1%), Jaguar (+9.0%), Mazda (+8.0%), Mercedes-Benz (+4.1%), Hyundai (+2.4%), Mitsubishi (+1.9%), Ford (+1.1%) and Fiat (+1.0%). Double-digit gains in light truck sales were

confirmed by Mercedes-Benz (+28.0%), Mazda (+14.7%) and Hyundai (+12.9%). Year-end sales were up for all automakers mentioned above with the exception of Jaguar (-7.0%).

Porsche (+0.9%), Volvo (+0.7%), MINI (+0.3%) Volkswagen (+0.1%) and Honda (+0.0%) remained relative to par in December sales compared to last year. Porsche recorded a 30.4% surge in light truck deliveries, offsetting a 20.9% decline in passenger car volume. Porsche (+11.1%) and Honda (+1.0%) were the only two automakers to confirm growth in year-end sales.

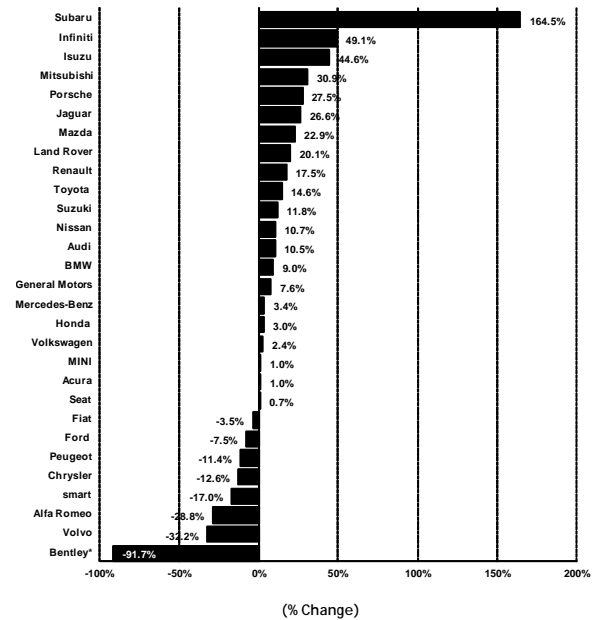
Declines in December deliveries were evident at Land Rover (-0.2%), Infiniti (-9.3%) and Scion (-11.7%). Year-end sales were up for all automakers mentioned above with the exception of Scion (-15.1%). **DAR**

Mexican Sales - Year End 2014

Fourth quarter Mexican vehicle sales improved 12.3% as 345,841 units were purchased, up from 308,048 units in fourth quarter 2013. Year end sales improved 6.8% reaching 1.14 million deliveries, up from 1.06 deliveries last year.

Twenty-one of the twenty-nine reporting automakers enjoyed an increase in total sales for 2014. Annual sales growth was led by Subaru (+164.5%), Infiniti (+49.1%), Isuzu (+44.6%) and Mitsubishi (+30.9%). Porsche (+27.5%), Jaguar (+26.6%), Mazda (+22.9%) and Land Rover (+20.1%) also posted impressive year end sales gains. The largest fallbacks in 2014 sales were felt by Bentley (-91.7%), Volvo (-32.2%), Alfa Romeo (-28.8%) and smart (-17.0%). **DAR**

Mexican Vehicle Sales % Change 2014 vs. 2013



Mexican Vehicle Sales - 4Q 2014 vs. 4Q 2013

	4Q 2014	4Q 2013	Percent Change	YE 2014	YE 2013	Percent Change	Mkt. Shr. 2014	Mkt. Shr. 2013	Change
Acura	866	719	20.4%	2,595	2,570	1.0%	0.2%	0.2%	0.0
Alfa Romeo	19	31	-38.7%	74	104	-28.8%	0.0%	0.0%	0.0
Audi	3,432	3,229	6.3%	12,939	11,712	10.5%	1.1%	1.1%	0.0
Bentley*	-	5	-100.0%	1	12	-91.7%	0.0%	0.0%	0.0
BMW	2,866	2,810	2.0%	10,502	9,635	9.0%	0.9%	0.9%	0.0
Chrysler	21,313	22,574	-5.6%	69,013	78,974	-12.6%	6.1%	7.4%	-1.3
Fiat	2,218	2,747	-19.3%	7,936	8,228	-3.5%	0.7%	0.8%	-0.1
Ford	23,895	23,125	3.3%	80,965	87,487	-7.5%	7.1%	8.2%	-1.1
General Motors	62,952	57,724	9.1%	216,958	201,604	7.6%	19.1%	19.0%	0.1
Honda	20,547	17,862	15.0%	60,128	58,381	3.0%	5.3%	5.5%	-0.2
Hyundai**	6,154	-	n.a.	12,064	-	n.a.	1.1%	0.0%	1.1
Infiniti	501	260	92.7%	1,475	989	49.1%	0.1%	0.1%	0.0
Isuzu	395	345	14.5%	1,468	1,015	44.6%	0.1%	0.1%	0.0
Jaguar	48	41	17.1%	181	143	26.6%	0.0%	0.0%	0.0
Land Rover	456	418	9.1%	1,630	1,357	20.1%	0.1%	0.1%	0.0
Mazda	13,213	9,827	34.5%	40,997	33,348	22.9%	3.6%	3.1%	0.5
Mercedes-Benz	2,815	2,443	15.2%	9,174	8,871	3.4%	0.8%	0.8%	0.0
MINI	1,423	1,154	23.3%	4,400	4,357	1.0%	0.4%	0.4%	0.0
Mitsubishi	3,486	2,760	26.3%	11,780	8,997	30.9%	1.0%	0.8%	0.2
Nissan	90,161	74,405	21.2%	291,729	263,477	10.7%	25.7%	24.8%	0.9
Peugeot	1,791	1,940	-7.7%	6,147	6,941	-11.4%	0.5%	0.7%	-0.1
Porsche	312	205	52.2%	975	765	27.5%	0.1%	0.1%	0.0
Renault	8,336	6,782	22.9%	24,889	21,187	17.5%	2.2%	2.0%	0.2
Seat	5,612	5,640	-0.5%	21,330	21,189	0.7%	1.9%	2.0%	-0.1
smart	346	507	-31.8%	1,391	1,676	-17.0%	0.1%	0.2%	0.0
Subaru	391	269	45.4%	1,410	533	164.5%	0.1%	0.1%	0.1
Suzuki	3,707	3,223	15.0%	12,510	11,190	11.8%	1.1%	1.1%	0.0
Toyota	23,175	20,646	12.2%	69,597	60,740	14.6%	6.1%	5.7%	0.4
Volkswagen	45,082	45,996	-2.0%	160,088	156,313	2.4%	14.1%	14.7%	-0.6
Volvo	329	361	-8.9%	1,063	1,568	-32.2%	0.1%	0.1%	-0.1
Total Vehicle Sales	345,841	308,048	12.3%	1,135,409	1,063,363	6.8%	100.0%	100.0%	

Includes some heavy-duty trucks

*Bentley sales no longer released as of February 2014.

**Hyundai sales reporting as of May 2014

Source: Asociacion Mexicana de la Industria Automotriz, A.C., and DesRosiers Automotive Consultants Inc.

Canadian and U.S. Light Vehicle Sales by Source of Manufacturer - Year End 2014

Total Canadian and U.S. Sales

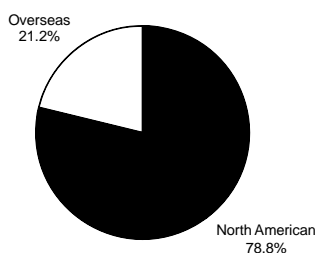
Fourth quarter light vehicle sales improved 7.3% compared to 4Q 2013 as 4.49 million units were purchased throughout the U.S. and Canada, up from 4.18 million units last year. Sales of vehicles sourced in North America shot-up 11.2% with 3.57 million units delivered while sales of vehicles assembled outside of North America witnessed a decline of 5.4% as sales totalled 918,604 units.

Year-end total sales grew 5.9% amounting to 18.27 million deliveries up from 17.25 million in 2013. Sales of North American-built light vehicles reached 14.39 million units, an upswing of 7.2%. Sales of vehicles built overseas inched up 1.1% with 3.87 million deliveries. Market share of North American-produced light vehicles was up 1.0 percentage points, settling at 78.8% while globally-built light vehicle market share slipped to 21.2%.

Canadian Sales

Canadian light vehicle sales moved up 8.3% in the fourth quarter as 425,339 units were sold. Between October and December, sales of North American-produced light vehicles shot-up 15.0% while sales of offshore-built light vehicles suffered from a fallback of 11.7%. Year-end light vehicle sales rose 6.1% on the strength of North

Canadian and U.S. Sales by Source of Origin - Total 2014



American built (+10.1%) vehicle sales while Import-assembled light vehicles sales declined 5.9%. Double-digit year-end sales gains were posted by Porsche (+34.0%), Nissan (+27.3%), Land Rover (+22.3%), Audi (+19.5%), Jaguar (+15.6%), Infiniti (+15.0%), Subaru (+14.3%), smart (+14.0%), Chrysler (+11.5%) and Lexus (+10.1%).

U.S. Sales

Total light vehicle sales in the U.S. grew 7.2% in the fourth quarter as 4.06 million units were purchased, up from 3.79 million in 2013. Sales of North American-built light vehicles climbed 10.8% while sales of Import-assembled light vehicles declined 4.6%. Between January and December, 16.42 million light vehicles were sold in the U.S., a 5.8% increase compared to the previous year when 15.51 million units were purchased. Sales of vehicles built within North America (+6.9%) witnessed larger year end sales gains than sales of Import-produced vehicles (+2.0%). On a volume basis, North American-assembled (12.95 million units) vehicle sales far exceeded the sales of Import-built (3.47 million units) vehicle sales.

The highest year-over-year sales gains in 2014 were achieved by Mitsubishi (+24.8%), Subaru (+21.0%), Chrysler (+16.3%), Audi (+15.2%), Land Rover (+13.7%), and smart (+12.8%). **DAR**

Canadian/U.S. Light Vehicle Sales by Source of Manufacture

Manufacturer	4Q 2014	4Q 2013	Percent Change	YE 2014	YE 2013	Percent Change	Market Share 2014	Market Share 2013	Point Change
Total North American	3,567,181	3,208,770	11.2%	14,394,174	13,422,962	7.2%	78.8%	77.8%	1.0
Total Overseas	918,604	970,689	-5.4%	3,873,362	3,831,132	1.1%	21.2%	22.2%	-1.0
Total Light Vehicle Sales	4,485,785	4,179,459	7.3%	18,267,536	17,254,094	5.9%			

Source: DesRosiers Automotive Consultants Inc., GAC, CVMA, and Ward's Automotive Reports

Canadian Light Vehicle Sales by Source of Manufacture - Year End 2014

Canadian Light Vehicle Sales by Source of Manufacture

Manufacturer	4Q	3Q	Percent	YE	YE	Percent	Market	Market	Point
	2014	2013	Change	2014	2013	Change	Share 2014	Share 2013	Change
Acura	5,871	4,776	22.9%	19,533	19,005	2.8%	1.1%	1.1%	0.0
North American	5,871	4,308	36.3%	19,142	17,841	7.3%	1.0%	1.0%	0.0
Overseas	0	468	-100.0%	391	1,164	-66.4%	0.0%	0.1%	0.0
Audi (Overseas)	6,557	5,022	30.6%	24,514	20,506	19.5%	1.3%	1.2%	0.1
BMW	8,319	8,648	-3.8%	32,805	31,710	3.5%	1.8%	1.8%	0.0
North American	2,869	3,238	-11.4%	12,076	11,111	8.7%	0.7%	0.6%	0.0
Overseas	5,450	5,410	0.7%	20,729	20,599	0.6%	1.1%	1.2%	-0.1
Chrysler	64,838	52,782	22.8%	290,004	260,015	11.5%	15.7%	14.9%	0.8
North American	64,430	52,463	22.8%	287,543	259,116	11.0%	15.5%	14.9%	0.7
Overseas	408	319	27.9%	2,461	899	173.7%	0.1%	0.1%	0.1
Ford	64,725	58,448	10.7%	291,823	283,451	3.0%	15.8%	16.2%	-0.5
North American	63,925	57,925	10.4%	288,961	279,592	3.4%	15.6%	16.0%	-0.4
Overseas	800	523	53.0%	2,862	3,859	-25.8%	0.2%	0.2%	-0.1
General Motors	60,513	55,021	10.0%	249,800	234,944	6.3%	13.5%	13.5%	0.0
North American	58,800	52,043	13.0%	242,246	226,505	6.9%	13.1%	13.0%	0.1
Overseas	1,713	2,978	-42.5%	7,554	8,439	-10.5%	0.4%	0.5%	-0.1
Honda	37,895	37,570	0.9%	152,893	145,231	5.3%	8.3%	8.3%	-0.1
North American	37,741	33,949	11.2%	144,927	135,359	7.1%	7.8%	7.8%	0.1
Overseas	154	3,621	-95.7%	7,966	9,872	-19.3%	0.4%	0.6%	-0.1
Hyundai	28,719	27,505	4.4%	138,104	137,100	0.7%	7.5%	7.9%	-0.4
North American	13,443	16,767	-19.8%	70,640	78,473	-10.0%	3.8%	4.5%	-0.7
Overseas	15,276	10,738	42.3%	67,464	58,627	15.1%	3.6%	3.4%	0.3
Infiniti	2,653	2,074	27.9%	10,291	8,947	15.0%	0.6%	0.5%	0.0
North American	1,015	758	33.9%	3,613	3,191	13.2%	0.2%	0.2%	0.0
Overseas	1,638	1,316	24.5%	6,678	5,756	16.0%	0.4%	0.3%	0.0
Jaguar (Overseas)	308	285	8.1%	1,460	1,263	15.6%	0.1%	0.1%	0.0
Kia	13,822	13,873	-0.4%	70,007	72,449	-3.4%	3.8%	4.2%	-0.4
North American	3,319	2,952	12.4%	13,982	14,542	-3.9%	0.8%	n.a.	n.a.
Overseas	10,503	10,921	-3.8%	56,025	57,907	-3.3%	3.0%	3.3%	-0.3
Land Rover (Overseas)	1,614	1,495	8.0%	6,283	5,136	22.3%	0.3%	0.3%	0.0
Lexus	4,675	4,128	13.3%	17,565	15,949	10.1%	0.9%	0.9%	0.0
North American	2,128	1,770	20.2%	7,755	6,961	11.4%	0.4%	0.4%	0.0
Overseas	2,547	2,358	8.0%	9,810	8,988	9.1%	0.5%	0.5%	0.0
Mazda	15,177	16,255	-6.6%	72,098	71,859	0.3%	3.9%	4.1%	-0.2
North American	6,150	-	n.a.	18,576	1,029	1705.2%	1.0%	0.1%	0.9
Overseas	9,027	16,255	-44.5%	53,522	70,830	-24.4%	2.9%	4.1%	-1.2
Mercedes-Benz	10,257	9,080	13.0%	38,005	34,781	9.3%	2.1%	2.0%	0.1
North American	3,744	1,952	91.8%	10,509	7,330	43.4%	0.6%	0.4%	0.1
Overseas	6,513	7,128	-8.6%	27,496	27,451	0.2%	1.5%	1.6%	-0.1
MINI (Overseas)	1,865	1,610	15.8%	5,383	6,013	-10.5%	0.3%	0.3%	-0.1
Mitsubishi	5,288	5,002	5.7%	22,704	21,104	7.6%	1.2%	1.2%	0.0
North American	1,634	1,819	-10.2%	6,594	7,614	-13.4%	0.4%	0.4%	-0.1
Overseas	3,654	3,183	14.8%	16,110	13,490	19.4%	0.9%	0.8%	0.1
Nissan	23,514	20,493	14.7%	105,154	82,604	27.3%	5.7%	4.7%	0.9
North American	21,811	15,293	42.6%	95,592	57,271	66.9%	5.2%	3.3%	1.9
Overseas	1,703	5,200	-67.3%	9,562	25,333	-62.3%	0.5%	1.5%	-0.9
Porsche (Overseas)	1,112	879	26.5%	4,933	3,680	34.0%	0.3%	0.2%	0.1
smart (Overseas)	825	561	47.1%	2,550	2,237	14.0%	0.1%	0.1%	0.0
Subaru	10,613	9,603	10.5%	42,035	36,760	14.3%	2.3%	2.1%	0.2
North American	3,958	2,174	82.1%	11,732	8,376	40.1%	0.6%	0.5%	0.2
Overseas	6,655	7,429	-10.4%	30,303	28,384	6.8%	1.6%	1.6%	0.0
Suzuki (Overseas)	-	539	-100.0%	-	3,071	-100.0%	0.0%	0.2%	-0.2
Toyota	40,680	41,407	-1.8%	183,286	179,411	2.2%	9.9%	10.3%	-0.4
North American	35,752	36,123	-1.0%	158,851	154,045	3.1%	8.6%	8.8%	-0.2
Overseas	4,928	5,284	-6.7%	24,435	25,366	-3.7%	1.3%	1.5%	-0.1
Volkswagen	14,510	14,719	-1.4%	65,677	62,668	4.8%	3.5%	3.6%	0.0
North American	11,714	10,579	10.7%	52,039	43,916	18.5%	2.8%	10.2%	-7.3
Overseas	2,796	4,140	-32.5%	13,638	18,752	-27.3%	0.7%	1.1%	-0.3
Volvo (Overseas)	989	946	4.5%	4,466	4,673	-4.4%	0.2%	0.3%	0.0
Total North American	338,304	294,113	15.0%	1,444,778	1,312,272	10.1%	78.0%	75.2%	2.8
Total Overseas	87,035	98,608	-11.7%	406,595	432,295	-5.9%	22.0%	24.8%	-2.8
Total Light Vehicle Sales	425,339	392,721	8.3%	1,851,373	1,744,567	6.1%			

Source: DesRosiers Automotive Consultants Inc., GAC and CVMA

U.S. Light Vehicle Sales by Source of Manufacture - Year End 2014

U.S. Light Vehicle Sales by Source of Manufacture

Manufacturer	4Q 2014	4Q 2013	Percent Change	YE 2014	YE 2013	Percent Change	Market Share 2014	Market Share 2013	Point Change
Acura	48,093	44,606	7.8%	167,843	165,436	1.5%	1.0%	1.1%	0.0
North American	47,290	39,202	20.6%	158,143	142,899	10.7%	1.0%	0.9%	0.0
Overseas	803	5,404	-85.1%	9,700	22,537	-57.0%	0.1%	0.1%	-0.1
Audi (Overseas)	51,028	43,650	16.9%	182,011	158,061	15.2%	1.1%	1.0%	0.1
BMW	103,147	96,715	6.7%	339,738	309,280	9.8%	2.1%	2.0%	0.1
North American	23,200	20,829	11.4%	87,460	75,990	15.1%	0.5%	0.5%	0.0
Overseas	79,947	75,886	5.4%	252,278	233,290	8.1%	1.5%	1.5%	0.0
Chrysler	518,623	429,248	20.8%	2,030,117	1,746,231	16.3%	12.4%	11.3%	1.1
North American	518,532	429,248	20.8%	2,030,026	1,746,231	16.3%	12.4%	11.3%	1.1
Overseas	91	-	n.a.	91	-	n.a.	0.0%	0.0%	0.0
Fiat	10,620	10,494	1.2%	46,121	43,236	6.7%	0.3%	0.3%	0.0
North American	7,092	6,840	3.7%	33,708	35,834	-5.9%	0.2%	0.2%	0.0
Overseas	3,528	3,654	-3.4%	12,413	7,402	67.7%	0.1%	0.0%	0.0
Ford	579,535	583,843	-0.7%	2,418,260	2,435,794	-0.7%	14.7%	15.7%	-1.0
North American	568,269	574,584	-1.1%	2,375,050	2,396,091	-0.9%	14.5%	15.4%	-1.0
Overseas	11,266	9,259	21.7%	43,210	39,703	8.8%	0.3%	0.3%	0.0
General Motors	727,120	668,619	8.7%	2,935,008	2,786,078	5.3%	17.9%	18.0%	-0.1
North American	704,748	652,436	8.0%	2,840,250	2,715,603	4.6%	17.3%	17.5%	-0.2
Overseas	22,372	16,183	38.2%	94,758	70,475	34.5%	0.6%	0.5%	0.1
Honda	332,174	321,694	3.3%	1,373,029	1,359,872	1.0%	8.4%	8.8%	-0.4
North American	330,474	306,641	7.8%	1,344,952	1,294,853	3.9%	8.2%	8.3%	-0.2
Overseas	1,700	15,053	-88.7%	28,077	65,019	-56.8%	0.2%	0.4%	-0.2
Hyundai	168,260	172,565	-2.5%	725,718	720,783	0.7%	4.4%	4.6%	-0.2
North American	93,269	99,039	-5.8%	401,493	408,352	-1.7%	2.4%	2.6%	-0.2
Overseas	74,991	73,526	2.0%	324,225	312,431	3.8%	2.0%	2.0%	0.0
Infiniti	32,450	35,536	-8.7%	117,330	116,455	0.8%	0.7%	0.8%	0.0
North American	8,579	8,935	-4.0%	31,192	31,602	-1.3%	0.2%	0.2%	0.0
Overseas	23,871	26,601	-10.3%	86,138	84,853	1.5%	0.5%	0.5%	0.0
Jaguar (Overseas)	3,943	4,505	-12.5%	15,773	16,952	-7.0%	0.1%	0.1%	0.0
Kia	135,217	118,796	13.8%	580,234	535,179	8.4%	3.5%	3.5%	0.1
North American	59,406	53,173	11.7%	248,201	248,064	0.1%	1.5%	1.6%	-0.1
Overseas	75,811	65,623	15.5%	332,033	287,115	15.6%	2.0%	1.9%	0.2
Land Rover (Overseas)	13,041	14,651	-11.0%	51,465	50,010	2.9%	0.3%	0.3%	0.0
Lexus	90,706	83,087	9.2%	311,389	273,847	13.7%	1.9%	1.8%	0.1
North American	28,736	20,348	41.2%	89,469	80,728	10.8%	0.5%	0.5%	0.0
Overseas	61,970	62,739	-1.2%	221,920	193,119	14.9%	1.4%	1.2%	0.1
Mazda	64,848	63,456	2.2%	305,801	283,944	7.7%	1.9%	1.8%	0.0
North American	8,069	2	n.a.	18,019	6,273	187.2%	0.1%	0.0%	0.1
Overseas	56,779	63,454	-10.5%	287,782	277,671	3.6%	1.8%	1.8%	0.0
Mercedes-Benz	105,142	104,328	0.8%	356,136	334,324	6.5%	2.2%	2.2%	0.0
North American	47,030	19,657	139.3%	100,577	71,268	41.1%	0.6%	0.5%	0.2
Overseas	58,112	84,671	-31.4%	255,559	263,056	-2.8%	1.6%	1.7%	-0.1
MINI (Overseas)	16,924	16,867	0.3%	56,112	66,502	-15.6%	0.3%	0.4%	-0.1
Mitsubishi	19,278	17,246	11.8%	77,643	62,227	24.8%	0.5%	0.4%	0.1
North American	7,902	5,150	53.4%	31,176	24,894	25.2%	0.2%	0.2%	0.0
Overseas	11,376	12,096	-6.0%	46,467	37,333	24.5%	0.3%	0.2%	0.0
Nissan	291,173	271,768	7.1%	1,269,565	1,131,965	12.2%	7.7%	7.3%	0.4
North American	257,278	212,312	21.2%	1,073,222	866,049	23.9%	6.5%	5.6%	1.0
Overseas	33,895	59,456	-43.0%	196,343	265,916	-26.2%	1.2%	1.7%	-0.5
Porsche (Overseas)	11,641	10,774	8.0%	47,007	42,323	11.1%	0.3%	0.3%	0.0
Scion (Overseas)	11,906	14,231	-16.3%	58,009	68,321	-15.1%	0.4%	0.4%	-0.1
smart (Overseas)	2,373	2,327	2.0%	10,453	9,264	12.8%	0.1%	0.1%	0.0
Subaru	138,208	111,276	24.2%	513,693	424,683	21.0%	3.1%	2.7%	0.4
North American	59,124	37,267	58.6%	191,792	161,938	18.4%	1.2%	1.0%	0.1
Overseas	79,084	74,009	6.9%	321,901	262,745	22.5%	2.0%	1.7%	0.3
Suzuki	-	-	n.a.	-	5,949	-100.0%	0.0%	0.0%	0.0
North American	-	-	n.a.	-	451	-100.0%	0.0%	0.0%	0.0
Overseas	-	-	n.a.	-	5,498	-100.0%	0.0%	0.0%	0.0
Toyota	476,371	440,545	8.1%	2,004,373	1,893,874	5.8%	12.2%	12.2%	0.0
North American	374,317	355,223	5.4%	1,585,024	1,484,882	6.7%	9.7%	9.6%	0.1
Overseas	102,054	85,322	19.6%	419,349	408,992	2.5%	2.6%	2.6%	-0.1
Volkswagen	96,110	92,871	3.5%	366,969	407,704	-10.0%	2.2%	2.6%	-0.4
North American	85,562	73,771	16.0%	309,642	318,688	-2.8%	1.9%	2.1%	-0.2
Overseas	10,548	19,100	-44.8%	57,327	89,016	-35.6%	0.3%	0.6%	-0.2
Volvo (Overseas)	12,515	13,040	-4.0%	56,366	61,233	-7.9%	0.3%	0.4%	-0.1
Total North American	3,228,877	2,914,657	10.8%	12,949,396	12,110,690	6.9%	78.9%	78.1%	0.8
Total Overseas	831,569	872,081	-4.6%	3,466,767	3,398,837	2.0%	21.1%	21.9%	-0.8
Total Light Vehicle Sales	4,060,446	3,786,738	7.2%	16,416,163	15,509,527	5.8%			

Source: DesRosiers Automotive Consultants Inc. and Ward's Automotive Reports

Canada Passenger Car Sourcing

CHRYSLER

Brampton, Ont.	Chrysler 300 Series Dodge Challenger, Charger
----------------	--

GENERAL MOTORS

Oshawa, Ont. Plant 1	Buick Regal Cadillac XTS Chevrolet Camaro, Impala
----------------------	---

Oshawa, Ont. Plant 2	Chevrolet Equinox, Impala
----------------------	---------------------------

HONDA

Alliston, Ont. Plant 1	Honda Civic
------------------------	-------------

Alliston, Ont. Plant 2	Honda Civic
------------------------	-------------

TOYOTA

Cambridge, Ont.	Toyota Corolla, Matrix
-----------------	------------------------

Source: DesRosiers Automotive Consultants Inc. and Ward's Automotive Reports

Canada Light Truck Sourcing

CHRYSLER

Windsor, Ont.	Chrysler Town & Country Dodge Caravan Ram Cargo Van
---------------	---

FORD

Oakville, Ont.	Ford Edge, Flex Lincoln MKT, MKX
----------------	-------------------------------------

GENERAL MOTORS

Ingersoll, Ont.	Chevrolet Equinox GMC Terrain
-----------------	----------------------------------

Oshawa, Ont. Plant 2	Chevrolet Equinox
----------------------	-------------------

HONDA

Alliston, Ont. Plant 2	Honda CR-V
------------------------	------------

TOYOTA

Cambridge, Ont.	Lexus RX Toyota Corolla
Woodstock, Ont.	Toyota RAV4

Source: DesRosiers Automotive Consultants Inc. and Ward's Automotive Reports

U.S. Passenger Car Sourcing

FLAT ROCK ASSEMBLY INC. (Formerly AUTOALLIANCE)		HYUNDAI	
Flat Rock MI	Ford Fusion, Mustang	Montgomery, AL	Hyundai Elantra Hyundai Sonata
CHRYSLER		KIA	
Belvidere, IL Detroit, MI (Conner) Sterling Heights, MI	Dodge Dart Dodge Viper Chrysler 200	West Point, GA	Kia Optima
FORD		NISSAN	
Chicago, IL Wayne, MI Flat Rock, MI	Ford Taurus Lincoln MKS Ford C-Max, Focus Ford Fusion, Mustang	Canton, MS Smyrna, TN	Nissan Altima Nissan Altima Nissan LEAF, Maxima
GENERAL MOTORS		SUBARU	
Bowling Green, KY Fairfax, KS Hamtramck, MI Lansing, MI (Grand River) Lordstown, OH Orion Township, MI	Chevrolet Corvette Buick LaCrosse Chevrolet Malibu Cadillac ELR Chevrolet Impala, Malibu, Volt Opel/Vauxhall Ampera (export only) Cadillac ATS, CTS Chevrolet Cruze Buick Verano Chevrolet Sonic	Lafayette, IN	Subaru Legacy Toyota Camry
HONDA		TOYOTA	
Greensburg, IN Marysville, OH	Acura ILX Honda Civic Acura ILX, TLX Honda Accord	Blue Springs, MS Georgetown, KY	Toyota Corolla Toyota Avalon, Camry,
		VOLKSWAGEN	
		Chattanooga, TN	Volkswagen Passat

Source: DesRosiers Automotive Consultants Inc. and Ward's Automotive Reports

U.S. Light Truck Sourcing

BMW		HONDA	
Spartanburg, SC	BMW X3, X4, X5, X6	East Liberty, OH Lincoln, AL	Acura RDX Honda Crosstour, CR-V Acura MDX Honda Odyssey, Pilot, Ridgeline
CHRYSLER		KIA	
Belvidere, IL Detroit, MI (Jefferson North) Toledo, OH (South) Toledo, OH (North) Warren, MI (Dodge City)	Jeep Compass, Patriot Dodge Durango, Jeep Grand Cherokee Jeep Wrangler/Unlimited Jeep Cherokee Ram Pickup	West Point, GA	Hyundai Santa Fe Kia Sorento
FORD		Daimler AG (MERCEDES-BENZ)	
Avon Lake, OH Chicago, IL Claycomo, MO (Kansas City 1) Claycomo, MO (Kansas City 2) Dearborn Truck, MI Louisville, KY (Louisville Assembly Plant) Louisville, KY (Kentucky Truck)	Ford Econoline Ford Explorer Ford Transit Ford F-Series Ford F-Series, Ford Escape Lincoln MKC Ford Expedition Ford F-Series SuperDuty Lincoln Navigator	Vance, AL	Mercedes-Benz C-Class, GL-Class, M-Class, R-Class
GENERAL MOTORS		MITSUBISHI	
Arlington, TX Flint, MI Fort Wayne, IN Lansing Delta, MI (Lansing Delta) Spring Hill, TN Wentzville, MO	Cadillac Escalade/ESV Chevrolet Suburban, Tahoe GMC Yukon, Yukon XL Chevrolet Silverado GMC Sierra Chevrolet Silverado GMC Sierra Buick Enclave Chevrolet Traverse GMC Acadia Chevrolet Equinox Chevrolet Colorado, Express GMC Canyon, Savana	Normal, IL	Mitsubishi Outlander Sport
		NISSAN	
		Canton, MS Smyrna, TN	Nissan Armada, Frontier, Murano Nissan NV, Titan, Xterra Infiniti QX60 Nissan Pathfinder, Rogue
		SUBARU	
		Lafayette, IN	Subaru Outback
		TOYOTA	
		Georgetown, KY Princeton, IN San Antonio, TX	Toyota Venza Toyota Highlander, Sequoia Toyota Sienna Toyota Tundra, Tacoma

Source: DesRosiers Automotive Consultants Inc. and Ward's Automotive Reports

Mexico Passenger Car Plant Sourcing

CHRYSLER de MEXICO S.A.	
Toluca, Mexico	Fiat 500
FORD MOTOR CO. S.A.	
Cuautitlan, Mexico	Ford Fiesta
Hermosillo, Sonora	Ford Fusion
	Lincoln MKZ
GENERAL MOTORS de MEXICO S.A.	
Ramos Arizpe, Coahuila	Chevrolet Sonic
San Luis Potosi, San Luis Potosi	Chevrolet Aveo
HONDA de MEXICO S.A.	
Celaya, Guanajuato	Honda Fit, HR-V
MAZDA MOTOR MANUFACTURING de MEXICO S.A.	
Salamanca, Guanajuato	Mazda2, Mazda3
NISSAN MEXICANA S.A.	
Aguascalientes, Aguascalientes. Plant 1	Nissan March, Note, Nissan Sentra, Versa
Aguascalientes, Aguascalientes. Plant 2	Nissan Sentra
Cuernavaca, Morelos	Nissan Tsuru Nissan Tiida Nissan Versa
VOLKSWAGEN de MEXICO S.A.	
Puebla, Puebla	Volkswagen Beetle Volkswagen Golf Volkswagen Jetta

Source: DesRosiers Automotive Consultants Inc. and Ward's Automotive Reports

Mexico Light Truck Sourcing

CHRYSLER de MEXICO S.A.	
Saltillo, Coahuila	Ram Pickup, Promaster
Toluca, Mexico	Dodge Journey
	Fiat Freemont
GENERAL MOTORS de MEXICO S.A.	
Ramos Arizpe, Coahuila	Cadillac SRX Chevrolet Captiva
San Luis Potosi, San Luis Potosi	Chevrolet Trax
Silao, Guanajuato	Chevrolet Silverado GMC Sierra
HONDA de MEXICO S.A.	
El Salto, Jalisco	Honda CR-V
NISSAN MEXICANA S.A.	
Cuernavaca, Morelos	Chevrolet City Express Nissan Chassis, pick-up Nissan NV200
TOYOTA MOTOR MFG. De BAJA CALIFORNIA	
Tijuana, Baja California	Toyota Tacoma

Source: DesRosiers Automotive Consultants Inc. and Ward's Automotive Reports